



November

Featured Part

Bend It and Send It!

Guess how many pieces were welded together to make this January's Part of the Month? If you said more than one, you'd be wrong! The part we are featuring this month was formed from a single flat pattern. After the flat pattern is cut on our laser, the part goes to our forming department where 24 bends are added. From there a brief stop in our weld shop to have the corners welded, and then the parts are passivated and shipped. Whether it is forming, welding, or machining, send us your inquiries today!

Problem:

From the computer world: What does the word "modem" abbreviate?

Quiz:

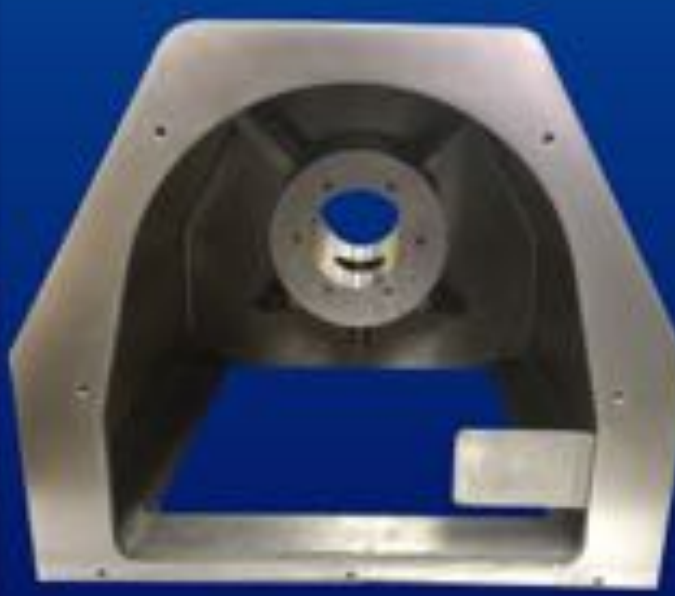
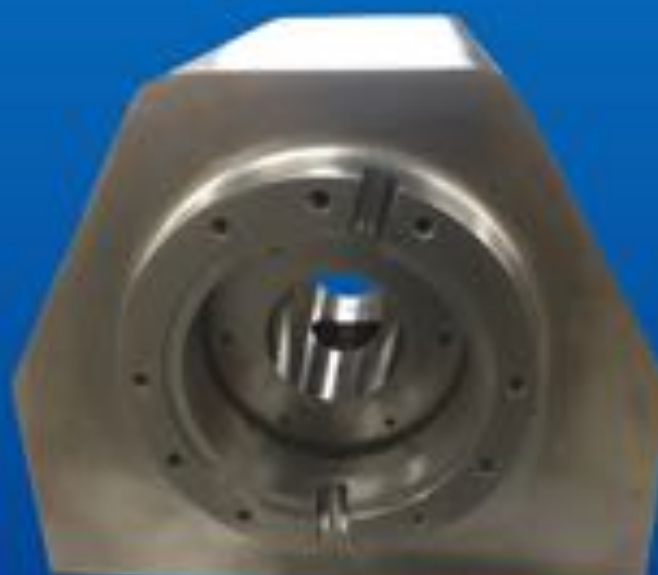
During World War II the Japanese foot soldiers invaded a land region that is today part of United States. What is it?

*Please be sure to check our website for answers to all previous months Problems and Quizzes! Go to www.metalwork.com and click on Problem of the Month link.

Quote:

"You cannot shake hands with a clenched fist."

~ Indira Gandhi ~



Complete Assembly, Sheet Metal, Machined and Welded Components.

- > ISO 9001 certified quality management system
- > Certified Welding to MIL-STD-1595a for process DTAW Group 1b, 1ia
- > 100% in-process inspection
- > Certified inspection reports

All CAD Formats:

Solidworks (sldprt, sldasm), AutoCAD (dwg, dxf), Inventor, Pro/E, CATIA 4/5, Unigraphics, Parasolid, ACIS SAT, iges, step, ckd, prt, stl

www.metalwork.com
Come Visit Us!

102D Park Drive Montgomeryville, PA
P: 215.654.7778 F: 215.654.7779
E: Sales@metalwork.com

Sheet Metal
Polishing

Enclosures
Welding & Brazing

Machining
Laser Cutting