

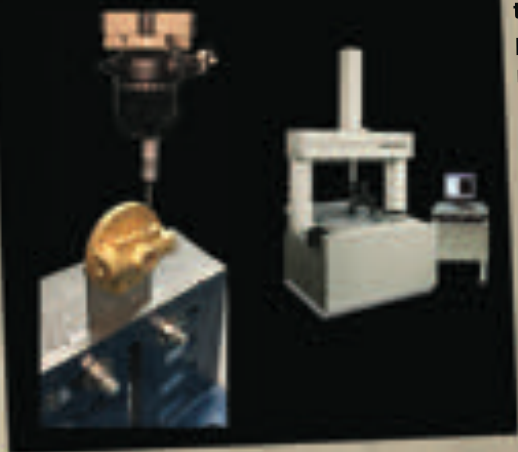
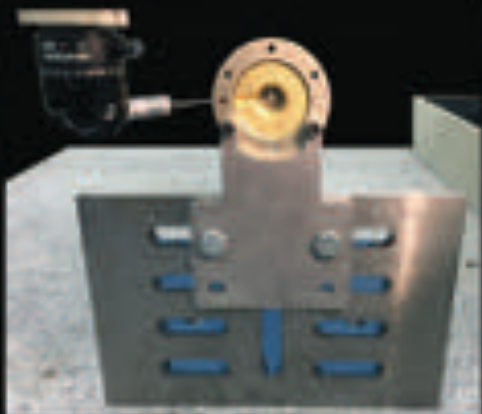


DECEMBER

Featured Part

Meet Our CMM

For December's Featured Part we are showcasing our CMM. A Coordinate Measuring Machine (or CMM) is an extremely precise way to measure a part. Our CMM has a working envelope of 30"W x 30"D x 24"H, and a linear resolution of ± 0.00002 ". The CMM can be operated by manual movements, joystick controls, or via CNC commands. Our state-of-the-art software can import a CAD model which can then be used to create a CNC program to measure a part. In the pictures shown here our CMM has been programmed from a CAD model and is measuring a part that was machined on our 5-axis vertical milling machine. The probe will reposition 6 times during the course of this program in order to measure all of the relevant relationships between the features. Whether being used to verify a machining process internally, or as part of a comprehensive inspection report for our customer, the CMM is a valuable tool here at CompuCraft.



Complete Assembly, Sheet Metal, Machined and Welded Components.

- > ISO 9001 certified Quality Management System.
- > Certified Welding to MIL-STD-1595a for process DTAW Group 1b, 1ia.
- > 100% in-process inspection.
- > Certified inspection reports.

Problem:

The ages of a father and son add up to 66. The father's age is the son's age reversed. How old could they be? (3 possible solutions).

Quiz:

What United States President Banned Christmas Trees in the white house.

- a. Zachory Taylor b. John Adams c. Theodore Roosevelt d. Abraham Lincoln

• Please be sure to check our website for answers to all previous months Problems and Quizzes! Go to www.metalwork.com and click on Problem of the Month link.

Quote:

"Christmas is a season for kindling the fire for hospitality in the hall, the genial flame of charity in the heart."
~ Washington Irving ~

All CAD Formats:
Solidworks (sldprt, sldasm), AutoCAD (dwg, dxf), Inventor, Pro/E, CATIA 4/5, Unigraphics, Parasolid, ACIS SAT, iges, step, ckd, prt, stl

