

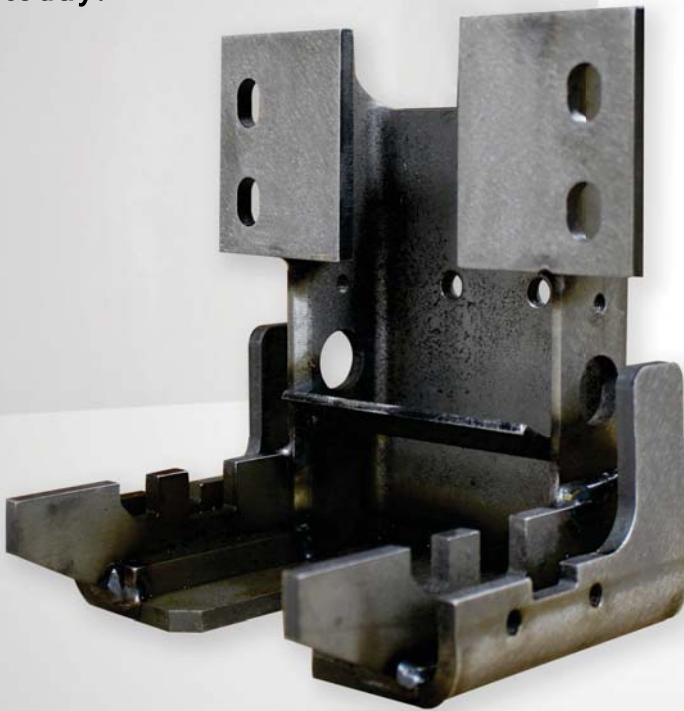


COMPUCraft
Fabricators Inc.
Precision Metal Components



Precision Welding

This month we are featuring a weldment made from ¼” thick steel plate and structural ‘C’ channel. The steel plate is cut on our laser, and then some of the pieces are formed. Concurrently, the structural ‘C’ channel is cut to spec in our machine shop. Once all of the components are complete the parts move on to our welding department where a custom fixture is employed to hold the tight tolerances required on the finished product. The final stop for this part prior to shipping is the Inspection Department, where final dimensions and tolerances are verified, and inspection reports are created. If you have a tight tolerance weldment let us show you that it is “no problem.” Send your inquiries today.



September 2020 Featured Part

Quiz:

The very first one appeared in a newspaper on September 11th, 1875. The very first what?

- a. “Help Wanted” ad
- b. Crossword Puzzle
- c. Cartoon Strip
- d. Stocks page

Problem:

Find the next number based on previous numbers of the sequence. Hint: Numbers in the sequence require the use of each other to find the missing number.



*Please be sure to check our NEW website for answers to all previous months Problems and Quizzes! Go to www.metalwork.com and click on FEATURED PART page.

Quote:

“Tell me and I forget. Teach me and I remember. Involve me and I learn.”

~ Benjamin Franklin ~

All CAD Formats:

Solidworks (sldprt, sldasm), AutoCAD (dwg, dxf), Inventor, Pro/E, CATIA 4/5, Unigraphics, Parasolid, ACIS SAT, iges, step, ckd, prt, stl

Sheet Metal Enclosures Machining

Polishing

Welding & Brazing

Laser Cutting

Complete Assembly, Sheet Metal, Machined and Welded Components.

- > ISO 9001 certified quality management system.
- > Certified Welding to MIL-STD-1595a for process DTAW Group 1b, 1ia.
- > 100% in-process inspection.
- > Certified inspection reports.

www.metalwork.com

Come Visit Us!

102D Park Drive
Montgomeryville, PA
P: 215.654.7778
F: 215.654.7779
E: sales@metalwork.com