



# November

Featured Part

## Hopper Experts

Reducing funnels, round-to-square transitions, square-to-rectangle transitions, offset funnels, you name it, we've made it. This month we are featuring a hopper that has a rectangular opening and reduces down to a 3" radius with a perforated bottom to suit our customer's application. This hopper is made from 316 stainless steel with a #4 brushed finish. After welding, the part goes to the grinding room where our skilled metal polishers remove the weld burn and polish the welds back to a #4 finish to match the rest of the part. If you have a funky funnel, hinky hopper, or tricky transition let us offer our expertise, send your inquiries today.

### Did You Know?:

Only about 10% of the world's currency is physical money, the rest only exists on computers.

There are more than 5000 new computer viruses released every month.

### Problem:

In a lake, there is a patch of lily pads. Every day, the patch doubles in size. If it takes 20 days for the patch to cover the entire lake, how long would it take for the patch to cover half of the lake?

\*Please be sure to check our website for answers to all previous months Problems and Quizzes! Go to [www.metalwork.com](http://www.metalwork.com) and click on Problem of the Month link.

### Quote:

"By failing to prepare, you are preparing to fail."

~ Benjamin Franklin ~

Complete Assembly, Sheet Metal, Machined and Welded Components.

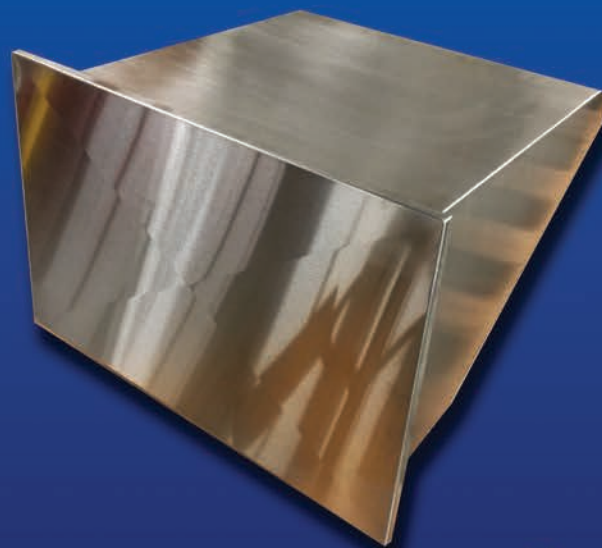
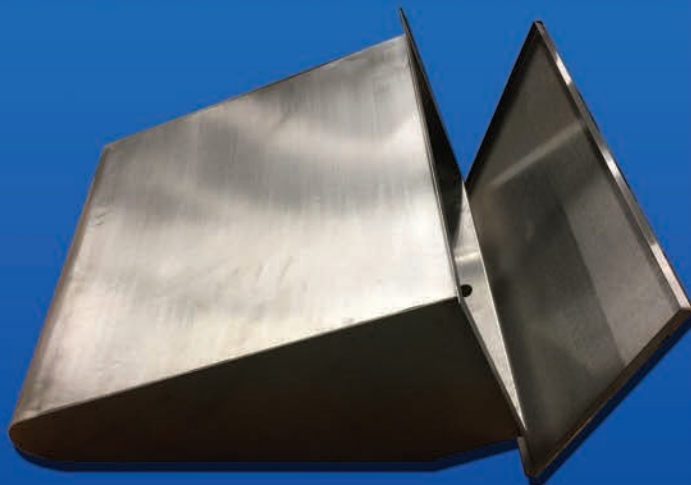
- > ISO 9001 certified quality management system
- > Certified Welding to MIL-STD-1595a for process DTAW Group 1b, 1ia
- > 100% in-process inspection
- > Certified inspection reports

#### All CAD Formats:

Solidworks (sldprt, sldasm), AutoCAD (dwg, dxf), Inventor, Pro/E, CATIA 4/5, Unigraphics, Parasolid, ACIS SAT, iges, step, ckd, prt, stl

[www.metalwork.com](http://www.metalwork.com)  
Come Visit Us!

102D Park Drive Montgomeryville, PA  
P: 215.654.7778 F: 215.654.7779  
E: [Sales@metalwork.com](mailto:Sales@metalwork.com)



Sheet Metal  
Polishing

Enclosures  
Welding & Brazing

Machining  
Laser Cutting