



# November 2020

Featured Part

## Pharmaceutical Chute

For November's Featured Part we are showing off a chute used in the pharmaceutical industry. This chute is a two piece weldment that has been polished to a sanitary finish suitable for the environment it will be used in. The first piece of the weldment is cut from flat stainless steel sheet metal which is then formed. The second piece of the weldment is a piece of tubing that has also been laser cut. Utilizing the rotary 4th axis of our laser cutting machine we are able to load a tube in the chuck and quickly cut the profile of the tube to match the formed sheet metal. Rotary axis laser cutting is one of the many cost saving technologies that we have available to serve our customer's needs, send your inquiries today.



### Fun Fact:

Many people outside of the metal fabrication industry probably don't realize that welding is one of the few fabrication techniques that can be performed both on land, and underwater. Better yet, both wet and dry welding can be performed under the sea! The current records for underwater welding depth are 1075 feet for a dry weld, and 2000 ft for a wet weld, which was performed by the U.S. Navy.

### Quiz:

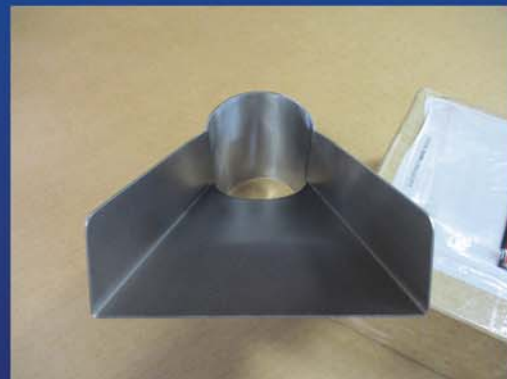
Which number replaces the question mark?

2	4	5	6
3	2	7	7
11	10	8	8
15	??	11	12

\*Please be sure to check our website for answers to all previous months Problems and Quizzes! Go to [www.metalwork.com](http://www.metalwork.com) and click on Problem of the Month link.

### Quote:

"Always remember that you are absolutely unique. Just like everyone else."  
~ Margaret Mead ~



Complete Assembly, Sheet Metal, Machined and Welded Components.

- > ISO 9001 certified quality management system
- > Certified Welding to MIL-STD-1595a for process DTAW Group 1b, 1a
- > 100% in-process inspection
- > Certified inspection reports

#### All CAD Formats:

Solidworks (sldprt, sldasm), AutoCAD (dwg, dxf), Inventor, Pro/E, CATIA 4/5, Unigraphics, Parasolid, ACIS SAT, Iges, step, ckd, prt, stl

[www.metalwork.com](http://www.metalwork.com)  
Come Visit Us!

102D Park Drive Montgomeriville, PA  
P: 215.654.7778 F: 215.654.7779  
E: Sales@metalwork.com

Sheet Metal  
Polishing

Enclosures  
Welding & Brazing

Machining  
Laser Cutting