

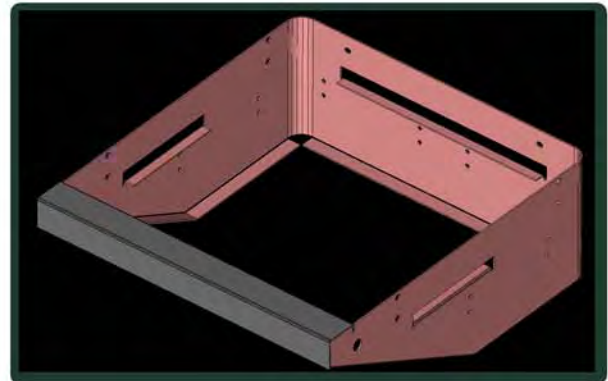


102 D Park Drive • Montgomeryville, PA 18936 • 215-654-7778 • Fax: 215-654-7779 • E-mail: POTM@metalwork.com

Complete Assembly Sheetmetal, Machined and Welded Components



- Approved supplier to ISO9000 Certified Companies
- Quality Assurance To MIL-I-45208A
- Certified Welding to MIL-STD-1595A for process GTAW Group 1b, 1ia,
- 100% In-process Inspection
- Certified Inspection Reports



**COMPLETE CAD CAPABILITY
 IN ALL CAD FORMATS.**

Including: dwg, dxf, slddrw, sldprt, sldasm, iges, step, Pro/E, ckd, prt, stl, CATIA 4/5, Unigraphics, Autodesk Inventor, Parasolid, Surface, ACIS SAT

Quote Of The Month:

"Our greatest glory is not in never falling, but in rising every time we fall." - Confucious

November's Answer:

Philadelphia

Quiz Of The Month:

What creature can see both infra-red and ultra-violet light?

Problem Of The Month:

How many 3 digit numbers have different digits in descending order (such as 732 or 960)?

