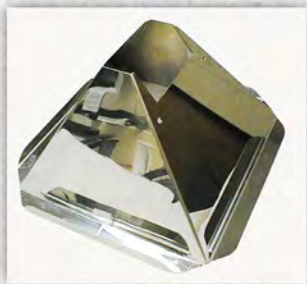
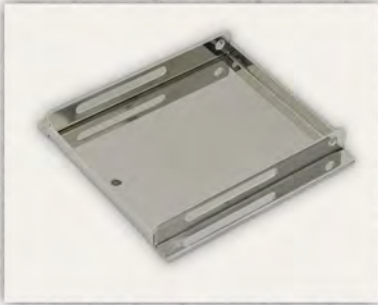




www.metalwork.com

June Part of The Month

102D Park Drive · Montgomeryville, PA 18936 · 215-654-7778 · Fax: 215-654-7779 · E-mail: potm@metalwork.com



This month you are looking at a large mirror finished stainless steel frame in the process of being welded. All welded seams will be polished back to a mirror finish prior to shipping. Also shown are some smaller mirror finished components.

All CAD Formats Accepted

Including: dwg, dxf, sldrw, sldprt, sldasm, iges, step, Pro/E, ckd, prt, stl, CATIA 4/5, Unigraphics, Autodesk Inventor, Parasolid, Surface, ACIS SAT

Complete Assembly,
 Sheetmetal, Machined,
 and Welded Components

- Approved supplier to ISO 9000 Certified Companies
- Quality Assurance To MIL-I-45208A
- Certified Welding to MIL-STD-1595A for process GTAW Group 1b, 1ia
- 100% In-process Inspection
- Certified Inspection Reports

Problem of the Month

What is the next number in the sequence:
 32 – 35 – 40 – 44 – 52 – 112 – ?
 (Hint: there are only nine numbers in this sequence, you have been given the first six.)

Quiz of the Month

What sitcom, started in 1988, featured Kevin, his best friend Paul, and annoying older brother Wayne?

Quote of the month

"Nearly all men can stand adversity, but if you want to test a man's character, give him power."
 Abraham Lincoln

May's Problem Answer

16 = 7 and 17 = 9 [The number of letters in the spelling of 16 (sixteen) is 7 and that of 17 (seventeen) is 9]

May's Quiz Answer

A) Reykjavik is the Capital of Iceland.