



COMPU Craft

Fabricators Inc.
Precision Metal Components



JULY

Part of the Month

Over The Top Hopper

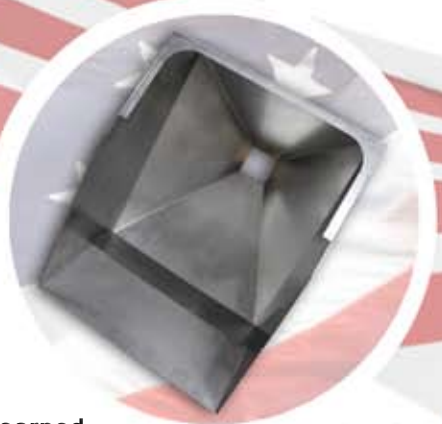
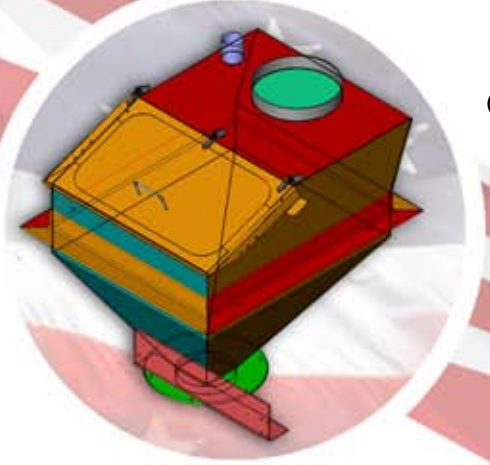
What's so special about the hopper we are featuring this month? For one, all of the weld seams are on the inside of the weldment. Standing at over 36" tall, this hopper will be used to dispense metallic powders, and must conform to a sanitary food-grade weld spec. Our skilled welders possess many certifications, allowing Compucraft to offer a wide range of welding capabilities to our customers. No matter how demanding your welding requirements are, Compucraft is up to the task. Send your inquiries today!

Complete Assembly, Sheet Metal, Machined and Welded Components.

- > ISO 9001 certified quality management system
- > Certified Welding to MIL-STD-1595a for process DTAW Group 1b, 1ia
- > 100% in-process inspection
- > Certified inspection reports

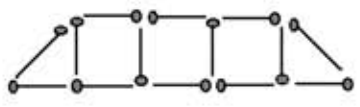
All CAD Formats:

Solidworks (sldprt, sldasm), AutoCAD (dwg, dxf), Inventor, Pro/E, CATIA 4/5, Unigraphics, Parasolid, ACIS SAT, iges, step, ckd, prt, stl



Quiz:
What is the estimated number of cookouts held on the 4th of July?

Problem:
The diagram below shows 3 squares and 2 triangles. Rearrange the matches to make 5 squares and 6 triangles.



* Please be sure to check our website for answers to all previous months Problems and Quizzes! Go to www.metalwork.com and click on Problem of the Month link.

Quote:
"Freedom has its life in the hearts, the actions, the spirit of men and so it must be daily earned and refreshed - else like a flower cut from its life-giving roots, it will wither and die."
~ Dwight D. Eisenhower ~

www.metalwork.com
Come Visit Us!
102D Park Drive Montgomeryville, PA
P: 215.654.7778 F: 215.654.7779
E: potm@metalwork.com