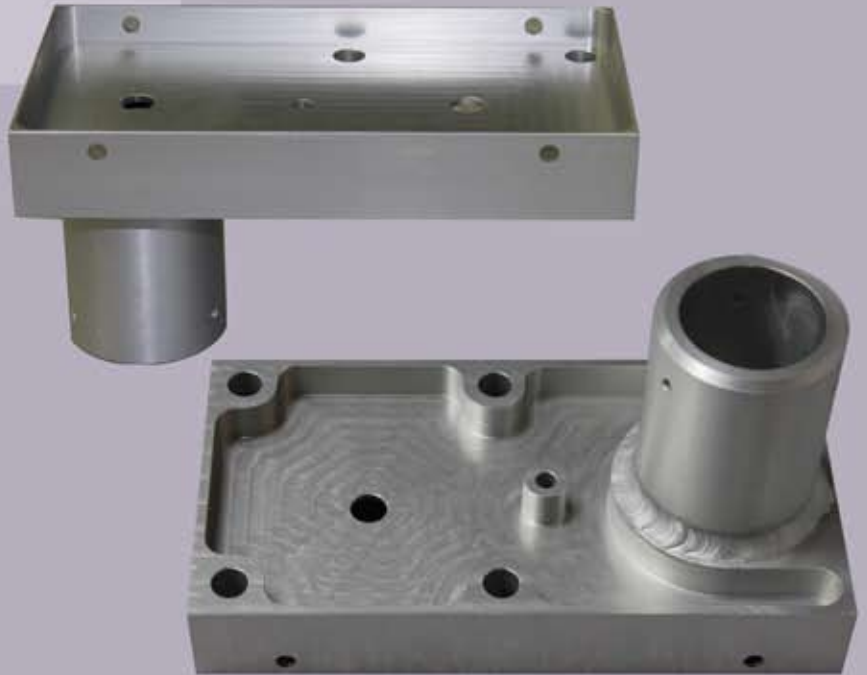




Part of the Month  
**August**



**In case you didn't notice...**

...we're pretty good at machining and welding! This part started out with a customer supplied CAD file. We imported their CAD file into our CNC/CAD software and from there generated a toolpath. Our machinists use their years of experience to optimize feed rates and cutting speeds, allowing for efficient and accurate cutting, and very competitive pricing. After the two items that make up this assembly are machined, they go to our weld shop where they are aligned and welded together. Whether it's machining, welding, or sheet metal, send your inquiries today!

**All CAD Formats:**

- Solidworks (sldprt, sldasm),
- AutoCAD (dwg, dxf), Inventor,
- Pro/E, CATIA 4/5, Unigraphics,
- Parasolid, ACIS SAT, iges, step,
- ckd, prt, stl

**Complete Assembly, Sheet Metal, Machined and Welded Components.**

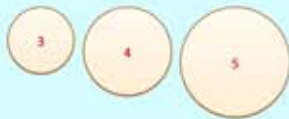
- > ISO 9001 certified quality management system
- > Certified Welding to MIL-STD-1595a for process DTAW Group 1b, 1ia
- > 100% in-process inspection
- > Certified inspection reports

**www.metalwork.com**  
**Come Visit Us!**

102D Park Drive Montgomeryville, PA  
P: 215.654.7778 F: 215.654.7779  
E: potm@metalwork.com

**Problem:**

Three boys want to equally share three pancakes. The picture shows the pancakes' diameters. Which part of the largest pancake will one of the boys receive?



- a. 1/2
- b. 2/3
- c. 3/5
- d. 4/9

**Quiz:**

What is the highest recorded temperature in the US?

- a. 128
- b. 154
- c. 134
- d. 162

\*Please be sure to check our website for answers to all previous months Problems and Quizzes! Go to [www.metalwork.com](http://www.metalwork.com) and click on Problem of the Month link.

**Quote:**

Sometimes when you innovate, you make mistakes. It is best to admit them quickly, and get on with improving your other innovations.

**Steve Jobs**