



COMPU Craft

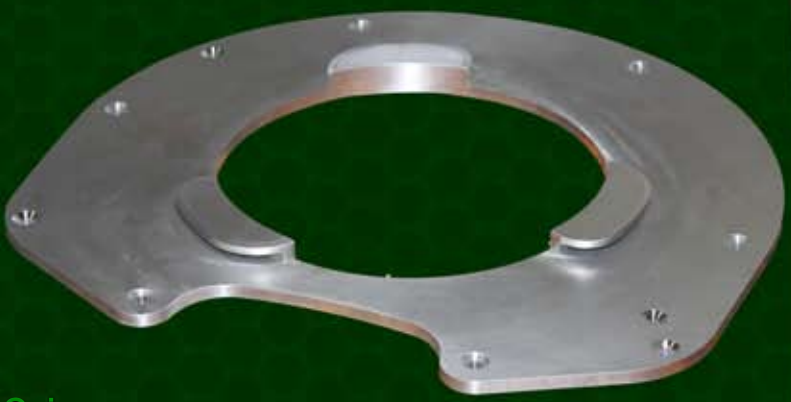
Fabricators Inc.
Precision Metal Components



- Complete Assembly, Sheet Metal,
Machined and Welded Components.
- > ISO 9001 certified quality management system
 - > Certified Welding to MIL-STD-1595a for process DTAW Group 1b, 1ia
 - > 100% in-process inspection
 - > Certified inspection reports

May

Part of the month



All CAD Formats:
Solidworks (sldprt, sldasm),
AutoCAD (dwg, dxf), Inventor,
Pro/E, CATIA 4/5, Unigraphics,
Parasolid, ACIS SAT, iges,
step, ckd, prt, stl

What Is It?

For the month of May, we are featuring this machined "Interface Plate". Starting out as a 15.5" square x 1" thick plate of DFARs compliant 7075-T7351 aluminum, there are a lot of aluminum chips that need to be created before this part is ready to ship. Fortunately our experienced machinists are able to take full advantage of our 3, 4 and 5 axis CNC machining capabilities to quickly and accurately fabricate anything that we throw at them. No matter how simple or complex your machining and sheet metal needs may be, send your inquiries today!

Quiz:
In the 1988-89 NHL season, Ron Hextall set the NHL record for most penalty minutes accumulated by a goaltender in a single season. How many penalty minutes was he assessed?

- a. 68
- b. 113
- c. 84
- d. 56

Problem:
A bridge will collapse in 17 minutes. 4 people want to cross before it collapses. It is a dark night and there is only one torch between them which must accompany whoever is crossing the bridge. Only two people can cross at a time. If "A" takes a minute to cross, "B" takes 2 minutes, "C" takes 5 minutes and "D" takes 10 minutes - how do they all cross before the bridge collapses?

* Please be sure to check our website for answers to all previous months Problems and Quizzes! Go to www.metalwork.com and click on Problem of the Month link.

Quote:
"Everything that is really great and inspiring is created by the individual who can labor in freedom."
~ Albert Einstein ~

www.metalwork.com
Come Visit Us!
102D Park Drive Montgomeryville, PA
P: 215.654.7778 F: 215.654.7779
E: potm@metalwork.com