



**COMPU**Craft  
Fabricators Inc.  
Precision Metal Components

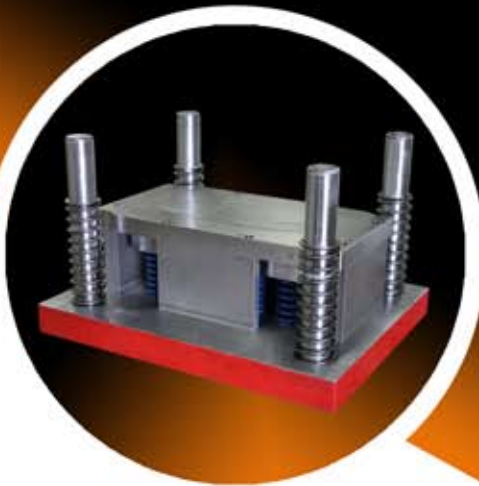


## A Part to Die For

This month we are featuring a custom made forming die. The bill of materials for this die set includes 18" x 14" x 1.5" thick top and bottom plates, 1-1/4" diameter corner guide posts, positive and negative profiles of the part from A2 tool steel, precision die springs from McMaster-Carr, and various other components. Drawing on our years of sheet metal forming experience, this die was designed utilizing our 3D CAD software, and then machined in one of our CNC vertical milling machines.



Finished Parts



**All CAD Formats:**  
Solidworks (sldprt, sldasm), AutoCAD (dwg, dxf), Inventor, Pro/E, CATIA 4/5, Unigraphics, Parasolid, ACIS SAT, iges, step, ckd, prt, stl



### Complete Assembly, Sheet Metal, Machined and Welded Components.

- > ISO 9001 certified quality management system
- > Certified Welding to MIL-STD-1595a for process DTAW Group 1b, 1ia
- > 100% in-process inspection
- > Certified inspection reports

### Problem:

Pumpkin Town has a neon sign that repeats the message over and over. The simple phrase pumpkins•for•sale• is repeated over and over again all day long. What letter or symbol will be the 100th one printed on this sign?

### Quiz:

Which actor in "Ghostbusters" was also a co-writer of the film?

- Rick Moranis
- Ernie Hudson
- Dan Aykroyd
- Bill Murray

### Quote:

"The true genius shudders at incompleteness - and usually prefers silence to saying something which is not everything it should be."

*Edgar Allan Poe*

\* Please be sure to check our website for answers to all previous Months Problems and Quizzes! Go to [www.metalwork.com](http://www.metalwork.com) and click on Problem of the Month link.

**www.metalwork.com**  
**Come Visit Us!**

102D Park Drive Montgomeryville, PA  
P: 215.654.7778 F: 215.654.7779  
E: [potm@metalwork.com](mailto:potm@metalwork.com)

Sheet Metal    Welding & Brazing    Laser Cutting    Enclosures    Machining    Polishing