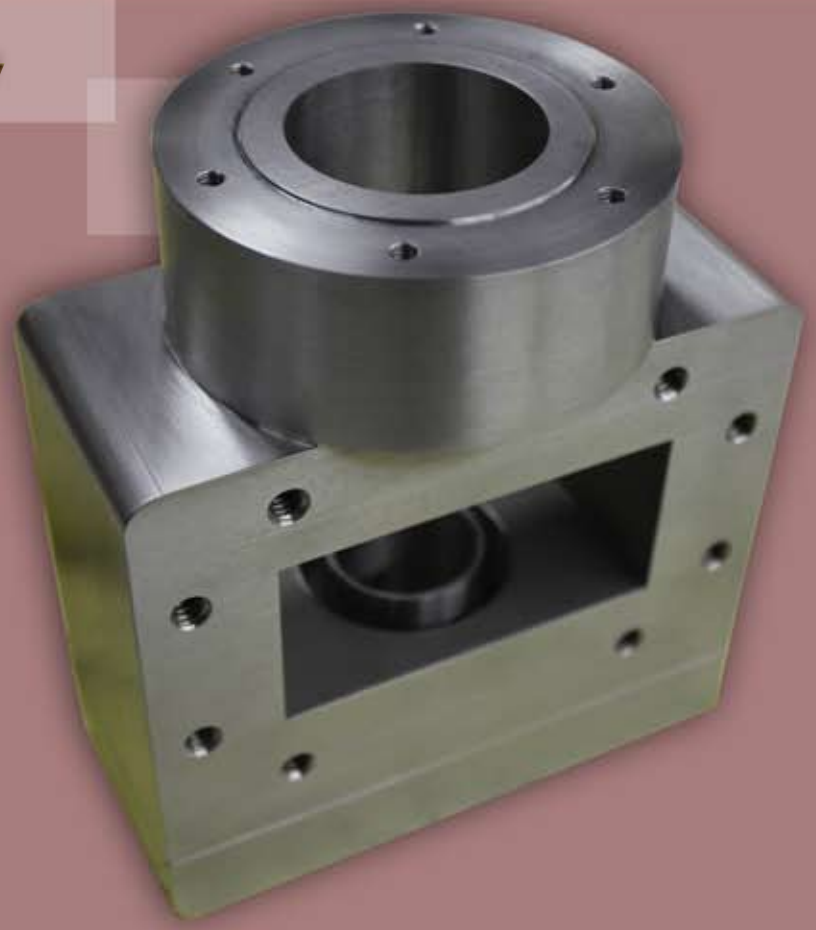




February

Part of the Month



A Diamond in the Rough

This month we are featuring a machined aluminum part. This part starts out as two chunks of aluminum. The larger 3" x 5" x 5" chunk is used to fabricate the main body of the part as well as the round feature on top. Over 66% of the aluminum is removed to reveal the part hidden within. Another 2.5" x 2.5" x 5" piece of aluminum is required to fabricate the item you see bolted to the bottom of the part (as shown in the picture above).

All CAD Formats:

- Solidworks (sldprt, sldasm),
- AutoCAD (dwg, dxf), Inventor,
- Pro/E, CATIA 4/5, Unigraphics,
- Parasolid, ACIS SAT, iges, step,
- ckd, prt, stl

Complete Assembly, Sheet Metal, Machined and Welded Components.

- > ISO 9001 certified quality management system
- > Certified Welding to MIL-STD-1595a for process
DTAW Group 1b, 1a
- > 100% in-process inspection
- > Certified inspection reports

www.metalwork.com
Come Visit Us!
102D Park Drive Montgomeryville, PA
P: 215.654.7778 F: 215.654.7779
E: potm@metalwork.com

Problem:

A farmer just bought ten trees. He wants to plant them in five rows with four trees in each row. How can this be done?

Quiz:

The Civil War brought the popularity of sending Valentines in the US.

True or False?

•Please be sure to check our website for answers to all previous months Problems and Quizzes! Go to www.metalwork.com and click on Problem of the Month link.

Quote:

"When we are no longer able to change a situation, we are challenged to change ourselves."

∞ Viktor Frankl ∞